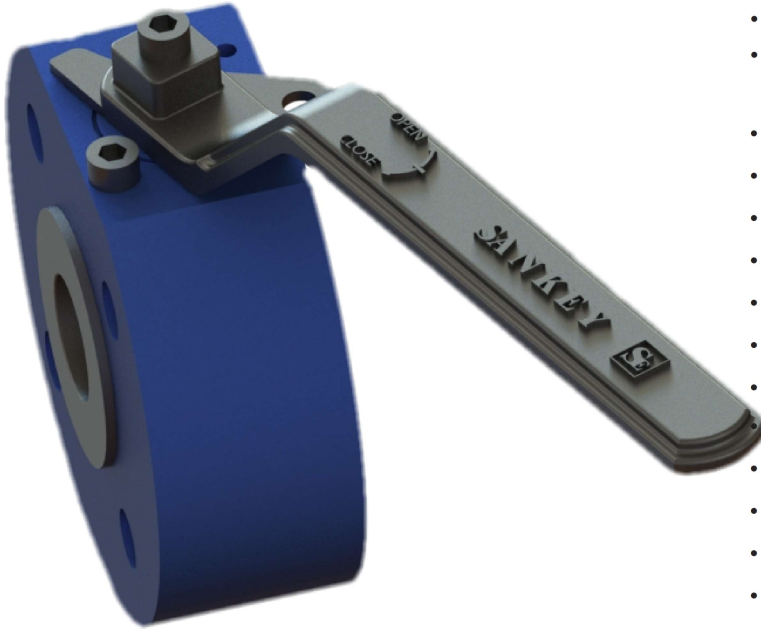
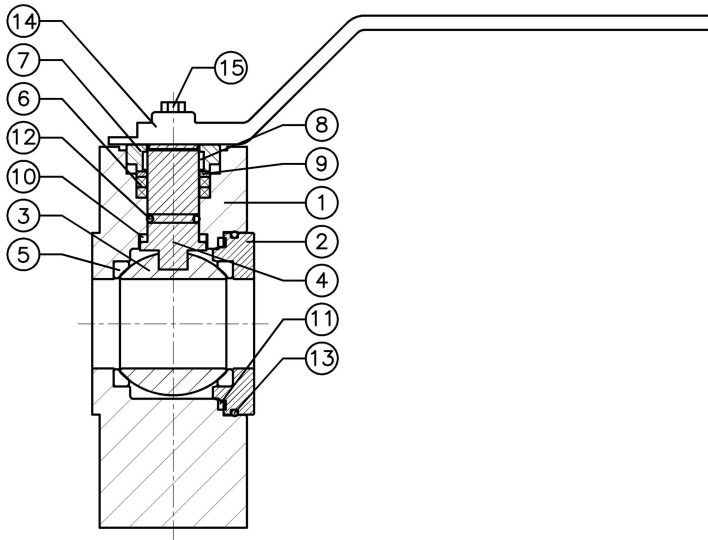


FEATURES & STANDARDS



- State of art valve design, unique valve insert design
- Forged Body Construction (150 – 300ASME).
- Triple independent low emission stem seals
- Valve stem rotation independent of gland nut ensuring full integrity of stem seal thus long life
- Blow-out proof stem
- Compact Non Standard Face to face dimensions
- Standard seats** : PTFE (150 – 300 ASME)
- Standard seals** : Graphite , PTFE
- Double anti-static protection
- Low torques with special wide seat design
- General Standards include: BS-5351, ASME B16.34
- Cavity filler also available
- Unique push fit design ,easy maintenance capability
- Fire-safe tested & certified API-607
- Low emission packing
- GFT thrust-washer and DELRIN gland bearing prevents galling & prevents against deformation.
- Suitable for application where space is a constraint , LPG skids, Process skids
- 3 way configuration also available



MANUFACTURING RANGE

(Available in full port)

	150 ASME PN 25	300ASME PN 50
1/2"	•	•
3/4"	•	•
1"	•	•
1 1/4"	•	•
1 1/2"	•	•
2"	•	•
2 1/2"	•	•
3"	•	•
4"	•	•

ITEM	DESCRIPTIONS
1	BODY
2	INSERT
3	BALL
4	STEM
5	SEAT
6	STEM SEAL
7	GLAND

ITEM	DESCRIPTIONS
8	GLAND BEARING
9	SPACER
10	STEM TRUST WASHER
11	BODY SEAL
12	STEM 'O' RING
13	INSERT 'O' RING
14	LEVER

ITEM	DESCRIPTIONS
15	STOPPER
16	ALLEN BOLT
17	TAG PLATE
18	
19	
20	
21	

NOTE: Drawings are representative, please contact Sankey Controls for specific and current PDF drawings.
 *Sankey limited warranty of 24 months from date of shipment or 18 months from the date of start-up.
 ** Other materials available upon request.