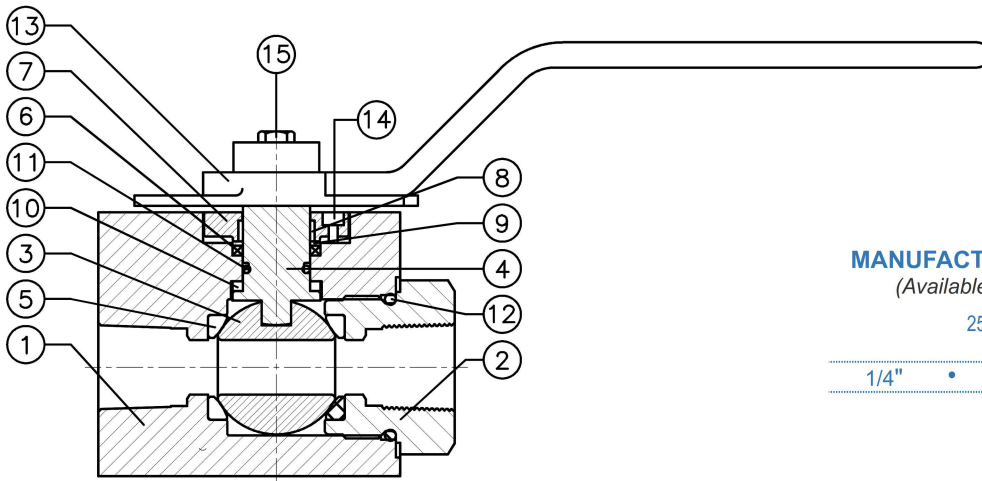
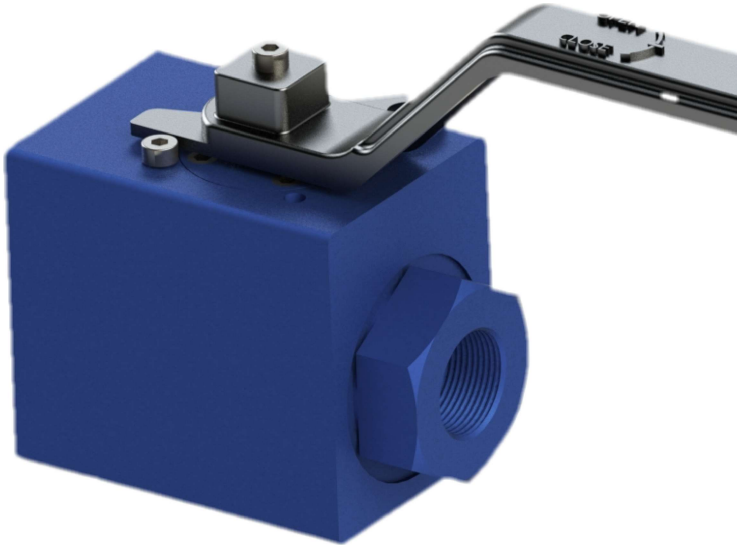


FEATURES & STANDARDS

- Industry leading warranty (24 months*)
- Solid Forged (#2500ASME).
- Triple independent low emission stem seals
- Blow-out proof stem
- AED O-rings (Also available)
- Standard seats** : PEEK (2500 ASME); DEVLON
- Standard seals** : VITON B , Graphite , PEEK
- Double anti-static protection
- Low torques, High volume with special wide seat design
- General Standards include: BS-5351, ASME B16.34
- Emission warranty: Maximum 100 PPM
- Testing: in accordance to API 598
- PEEK thrust-washer and DELRIN gland bearing prevents galling & prevents against deformation
- Material compliance with NACE specification.
- 100% RT , PMI ,DP Certified
- Additional stem O-rings for ultra-low emission applications.



MANUFACTURING RANGE

(Available in full port)

2500 ASME
PN 420

1/4" • 1/2" •

ITEM	DESCRIPTIONS	ITEM	DESCRIPTIONS	ITEM	DESCRIPTIONS
1	BODY	12	GLAND BEARING	12	LEVER
2	END CONNECTOR	13	SPACER	13	STOPPER
3	BALL	14	STEM TRUST WASHER	14	ALLEN BOLT
4	STEM	15	BODY SEAL	15	TAG PLATE
5	SEAT	16	STEM 'O' RING	16	
6	STEM SEAL	17	BODY 'O' RING	17	
7	GLAND	18	GLAND NUT SCREW	18	

NOTE: Drawings are representative, please contact Sankey Controls for specific and current PDF drawings.
*Sankey limited warranty of 24 months from date of shipment or 18 months from the date of start-up.
** Other materials available upon request.

info@sankeycontrols.com
www.sankeycontrols.com